

THE JOLLY FOX NISEKO GOLF TOURNAMENT

The most fun you will ever have on & off the golf course.





Have the game of your life at Niseko's most stunning golf courses

The Jolly Fox Niseko Golf Tournament is coined as "The US Open of Niseko" due to the competitive spirit of the players. It is like a fantasy pro tournament with online leaderboards and highly competitive play, whether you are a high handicapper or a low handicapper.

The event starts with the team draw, followed by three rounds of golf over three days at Niseko's most picturesque courses: Niseko Golf Course, Niseko Village Golf Course and Hanazono Golf Course.



Competitive-golf has never been funner

Treat yourself to four days of fun

The Jolly Fox Niseko Golf Tournament is 4 sensational days of suspense and laughter starting with the entertaining team draw, followed by 3 rounds of golf competition. The event culminates with the crowing of the Champion at the Gala Awards Dinner held at the Park Hyatt Hanazono Niseko.

Challenge yourself to a healthy competition

The Jolly Fox is a two-man team, three-round golf tournament, which emphasizes teamwork between a Fox (low-handicapper) and a Mouse (high-handicapper). It is a true test of skill, patience and endurance both on and off the course.

Stand a chance to win epic prizes

Everyone gets to go home happy with an amazing selection of prizes such as drivers, putters, free golf passes, golf bags, dinners, hotel stays and more! With a host of competitions throughout, there is a chance for everyone to win something special. Don't forget the ¥1M putting competition and ¥5M Hole-In-One competition!



The tournament also includes:

- 3 rounds of golf with buggy
- SWAG Bag full of golf-themed gifts
- Lunches after golf each day
- Team selection dinner party
- On-course snacks and beverages
- Gala Awards Dinner and party

4-Day Event Itinerary

Day 1: Team Draw

The experience starts out with the high energy team draw. Each Fox will randomly draw his or her Mouse and they will form the team that competes over the 54 holes.

Day 2: Best Ball

Both Fox and Mouse tee off on each hole. Teams choose one of the two drives and then both players hit successive shots, each time choosing the better result to play for the next shot until the ball is holed. 20% of the team's combined handicap is used to determine team handicap strokes received (fractions rounded). Each player's drive must be used at least three times on each nine holes.

Day 3: Scramble

Fox and Mouse each play their own ball. 90% of each player's handicap is used to determine handicap strokes he will receive (all fractions rounded). The team takes the better net score on each hole for the team's score on that hole. Each player's net score must be used at least six times.

Day 4: Alternate Shot

Both Fox and Mouse tee off on each hole. Teams choose one of the two drives and then players alternate shots until the ball is holed. 50% of the team's combined handicap is used to determine team handicap strokes received (fractions rounded). Each player's drive must be used at least three times on each nine holes.

The Gala Dinner

Celebrate the crowning of the champion with a Gala BBQ Dinner. Opportunity to turn it into an annual tradition where each year your group of friends compete to be crowned the Champion.

Optional experiences

• Day 5 at Hokkaido Classic

The #1 ranked course in Hokkaido and #8 ranked course in Japan by Golf Digest Magazine.



Experience the beauty of summer in Niseko

Golf isn't the only thing on the summer calendar here. When the snow melts and the vibrant greenery awakens, delight in the best of the season as the landscape comes alive.



Enjoyment for the whole family

The north island of Japan is extremely safe with long days, a temperate climate and vast open spaces. Accommodations are designed around the family group with numerous bedrooms, inviting dining and living spaces and outdoor entertaining areas.

Indulge in authentic Japanese cuisine

Hokkaido revolves around food during the summer months. Chefs draw inspiration from the surrounding landscape and create brilliant dishes with seasonal, fresh picked produce. Enjoy the best of 'Farm to Table' only in Hokkaido.

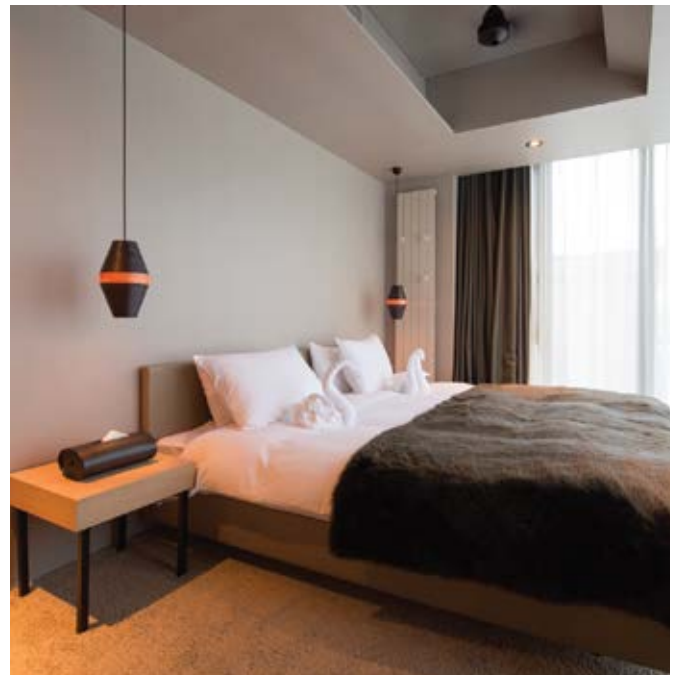
Embrace amazing outdoor adventures

There are plenty to do; from the slow and serene to the all out adrenaline rush. There is cycling along picturesque roads or rugged trails, hiking, fly fishing, scenic gondola rides with stunning views, white water rafting, stand up paddle boarding and more.

Make time for some serious relaxation

The Japanese have long understood the healing powers of mineral onsens. The Niseko region has numerous onsens dotted around the mountain landscape, each with their unique benefits. If you're up for yoga, there are great options both indoor and outdoor.

Refined, luxurious & exclusive: make your stay an unforgettable one at Aspect Niseko



Wind down in exquisite comfort after each game. Aspect Niseko, located in the heart of Hirafu, offers spacious, modern rooms with more than a touch of luxury.

Due to its central location, Aspect Niseko is incredibly close to all Niseko has to offer such as golf courses, restaurants, bars and in the winter it is only moments from the ski lifts. Spectacular Mt Yotei views and the extra touches here will guarantee your stay is one to remember.

6D5N The Jolly Fox Aspect Niseko Accommodation

Travel from 8 - 13 Oct 2022

Tournament program

- Day 1 (8 Oct)** Arrive New Chitose airport, transfer to Aspect Niseko
Day 2 (9 Oct) Team Draw/Selection. Evening, enjoy team selection dinner party
Day 3 (10 Oct) The Jolly Fox "Best Ball" with lunch
Day 4 (11 Oct) The Jolly Fox "Team Scramble" with lunch
Day 5 (12 Oct) The Jolly Fox "Alternate Shot" followed with the Gala Dinner
Day 6 (13 Oct) Transfer to New Chitose Airport

Price per person in Ringgit Malaysia from				
Package	2-To-Go	4-To-Go	6-To-Go	10-To-Go
Twin Sharing	12,295	11,679	11,315	11,065
Single Occupancy	16,869	16,025	15,519	15,179

PACKAGE INCLUSION

- 5 nights' accommodation on shared room package
- Tournament (9 - 12 Oct) includes:
 - (a) 3 rounds of golf with buggy
 - (b) Lunches after golf each day
 - (c) On-course snacks and beverages
 - (d) Sensational swag bag full of golf gifts
 - (e) Team selection dinner party
 - (f) Gala awards dinner & party
- Return private transfer from New Chitose Airport to Niseko
- Return transfer from Aspect Niseko to Golf Course each day
- Travel & Golf equipment Insurance

Courses

Niseko Village Golf Course

Niseko Village Golf Course is resort golf at its best. Golfers can enjoy a true Hokkaido nature experience with views of Mt. Yotei and the surrounding mountain ranges and fairways separated by White Birch and Larch trees that change with the seasons. Welcoming to all levels of golfers, the course offers a relatively flat layout, zebra-cut fairways, and all the comforts of the Hilton Niseko Village. Golfers are required to use carts, which can be driven through the fairways on this self-play 18-hole, par 73, 6845 yard course.

Niseko Golf Course

Niseko Golf Course – One of Hokkaido's most difficult and strategic courses, Niseko Golf Course was designed by world-renowned Arnold Palmer. Tee-shots facing Mt. Yotei, stunning rolling fairways and well-placed ponds and guard bunkers ensure the course is extremely fun for all levels of golfer.

Hanazono Golf

Hanazono Golf has 18 holes to challenge, fascinate and entertain golfers. Set in a beautiful natural setting featuring a spring water creek and natural birch forest it also offers stunning vistas of Mt. Yotei and the surrounding Annupuri mountain range. The course offers great variety in its layout which accentuates the breathtaking views on offer as you play through the various types of terrain and navigate some elevation changes especially on the back 9.

Remarks • Prices are based on per person basis.

- Accommodation is based on sharing basis in either 2 bedroom, 3 bed bedroom or 5 bedroom units. There is one room in each unit that do not have ensuite facility whereby the bathroom is in the common area. Guest can opt for own room occupancy with ensuite facility (based on first come first serve basis).
- There are a total of 3 golf courses: Niseko Golf Course, Niseko Village Golf Course & Hanazono Golf Course. Selection of Golf Course subject to final arrangement nearer to the date.
- Full payment is required upon booking confirmation.
- All players require to maintain either a USGA GHIN handicap, a World Handicap System (WHS) handicap or a GRINT handicap. The GRINT is a wonderful, golf application where you can maintain an official handicap with as few as 3 recorded rounds.
- Price excludes return air ticket to New Chitose & meals not mentioned in the inclusion.
- The Jolly Fox Golf Tournament requires a minimum of 20 players, failing which the tour will not materialize.

Terms & Conditions • Prices shown are correct at the time of printing. • Prices are subject to change without prior notice. Offer is limited to an allocated number of rooms on a daily basis. Confirmation of bookings are subject to availability. • Prices are STRICTLY not valid during any fair, event or peak period. Surcharge will be advised upon booking confirmation. • Other Holiday Tours and suppliers' standard terms and conditions apply.

Contact us: 03 6286 6288
Email: hello@holidaytours.com.my
www.holidaytourstravel.com

HOLIDAY TOURS 
(Co no. 197501001345 / 23070-H) (KPK/LN 0424) (International & Domestic)

Holiday Tours & Travel Sdn. Bhd.

Address: A-0-1, Block A | No 1, Jalan Seri Utara 1 |
Sri Utara, Off Jalan Ipoh | 68100 Kuala Lumpur

 @holidaytoursmalaysia  @holidaytoursmy